



**CHEMICALS
& LUBES**

SUPER CLEANER

- Great for all pre-assembly of motors; surface preparation for paint, decal and grip installation.
- Cleans carburetors, injector systems, disc brake rotors, pads, sparkplugs, etc...
- Removes moisture from ignition systems.
- Harmless to most plastics and paint.
- **Our most popular contact cleaner!**

SPRAY & WASH DEGREASER

- Penetrating formula dissolves grease, dirt and oil in one step.
- Easy-to-use, spray on and hose off!
- Leaves a pleasant smelling, sparkling clean surface.
- Safe to use on polished aluminum and most plastics.

LPC-3 PENETRANT / LUBRICANT

- Dissipates moisture.
- Prevents rust and corrosion
- Lubricates to unlock frozen threads.

ENGINE ASSEMBLY LUBE

- Dissipates moisture.
- Cleans carburetors, injector systems, disc brake rotors, pads, sparkplugs, etc...

PART#s	VL#	MFR#	Description	Nt Wt	Retail
	55-1130	3-21	Super Clnr	13 oz.	\$9.35
	55-1360	15-20-1	Spray/Wash	13 oz.	\$10.00
	55-1325	12-11	LPC-3 Oil	11 oz.	\$9.35
	55-1805	SP-701	Engine Lube	11 oz.	\$11.80

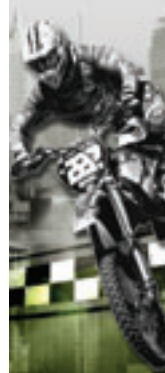


3-21

15-20

12-11

SP-701



INDEX

DEALER SUPPORT

HELMETS

MX APPAREL

GOGGLES & EYEWEAR

MX /ATV EQUIPMENT

HANDLEBARS & GRIPS

STREET ACCESSORIES

STREET APPAREL

CHAIN & SPROCKETS

BRAKES & ROTORS

CLUTCHES

SUSPENSION

MIRRORS

MANUALS

LUGGAGE

CHEMICALS & LUBES

MISC.

TIE DOWNS

SECURITY

ELECTRICAL

FILTERS

EXHAUST

TIRE & WHEEL

ORDER SHEET



15-22

4-20

5-20

5-16

AIR FILTER CLEANER - SPRAY

- Now for Fabric or Foam air filters
- Easy-to-use spray, can be quickly hosed off.
- Quickly dissolves dirt and grime; Won't harm filter glues.
- The quickest, cleanest, easiest way to clean air filters!

FABRIC FILTER OIL - SPRAY

- For gauze type air filter; filters out dirt and sand.
- Water repelling, makes engine breathe more efficiently.

FOAM FILTER OIL - SPRAY

- No waste application and water repelling.
- Super tacky to filter out dirt and sand!
- Helps engine breathe more efficiently.
- The easiest way to oil your filter.

FOAM FILTER OIL - LIQUID

- Super tacky, filters out dirt and sand & is water repelling.
- Makes engine breathe more efficiently.

FOAM FILTER CARE KIT

- **Kit includes** 1 Foam filter cleaner (15-22) & 1 Foam filter oil spray (5-20) shrink wrapped.

PART#s	VL#	MFR#	Description	Nt Wt	Retail
	55-1365	15-22	Air Filter Cleaner	15 oz.	\$11.80
	55-1140	4-20	Fabric Filter Oil	15 oz.	\$9.55
	55-1152	5-20	Foam Filter Oil Spray	13 oz.	\$12.12
	55-1150	5-16	Foam Filter Oil Liquid	16 oz.	\$12.40
	55-1369	15-202	Foam Filter Care Kit	28 oz.	\$21.17

PRO-ENVIRO CARB & CHOKE CLEANER

- Quickly cleans and frees valves, injectors, jets and linkages.
- Contains no chlorinated solvents.
- Environmentally safe product.
- Power spray.

PRO-ENVIRO BRAKE CLEANER

- Cleans and degreases contaminants from brake units.
- Increases performance.
- Environmentally safe product.
- Power spray.

PRO-ENVIRO CONTACT CLEANER

- Removes carbon and contaminants from spark plugs and electrical components.
- Environmentally safe product.
- Power spray.
- Contains no chlorinated solvents.
- Won't contaminate oils.

PART#s	VL#	MFR#	Description	Nt Wt	Retail
	55-1660	40-1	Carburetor Cleaner	16 oz.	\$9.35
	55-1670	40-2-1	Brake Cleaner	13 oz.	\$9.35
	55-1680	40-3-1	Contact Cleaner	13 oz.	\$9.35



40-1

40-2-1

40-3-1

**JUST THE FACTS
NO B.S.
MOTORCYCLE CONSUMER
NEWS**

OF 22 BRANDS TESTED,
ONLY ONE CHAIN LUBE
RANKED THE BEST.
PJ1 CHAIN LUBE



BLUE LABEL CHAIN LUBE

- Designed for O-Ring chain.
- Keeps rubber O-Ring moist and pliable.
- Prevents rust and corrosion.
- Won't fly off.

PART#s	VL#	MFR#	Nt Wt	Retail
	55-1030	1-08	5 oz.	\$8.27
	55-1040	1-22	13 oz.	\$13.45



BLACK LABEL CHAIN LUBE

- Heavy duty, high mileage formula chain lube.
- Allows for fewer adjustments, stops chain rust
- Perfect for on and off road applications.
- Super tacky!

PART#s	VL#	MFR#	Nt Wt	Retail
	55-1010	1-06A	5 oz.	\$8.27
	55-1020	1-20	13 oz.	\$13.45

PJ1

PJH Brands makes the world's largest exclusive line of motorcycle paints, lubricants and maintenance products. Their technologically advanced formulas are used on the Navy's B-2 Bomber and Stealth Fighter, as well as NASA's Space Shuttle program. This same level of technology goes into each and every product they make, so you don't have to fly to the moon to enjoy the same proven results!



INDEX

DEALER SUPPORT

HELMETS

MX APPAREL

GOGGLES & EYEWEAR

MX /ATV EQUIPMENT

HANDLEBARS & GRIPS

STREET ACCESSORIES

STREET APPAREL

CHAIN & SPROCKETS

BRAKES & ROTORS

CLUTCHES

SUSPENSION

MIRRORS

MANUALS

LUGGAGE

CHEMICALS & LUBES

MISC.

TIE DOWNS

SECURITY

ELECTRICAL

FILTERS

EXHAUST

TIRE & WHEEL

ORDER SHEET

FORK TUNER OIL

- Consistent, smooth damping action for more predictable ride.
- Fine tune your ride to personal preference.
- Contains preservative to prevent messy seal leaks.
- Non-fading, non-foaming.



PART#s	VL#	MFR#	Size	Retail
	55-1050	2-2.5W	1/2L	\$8.85
	55-1060	2-05W	1/2L	\$8.85
	55-1062	2-05W	1L	\$14.77
	55-1072	2-7.5W	1L	\$14.77
	55-1080	2-10W	1/2L	\$8.85
	55-1082	2-10W	1L	\$14.77
	55-1090	2-15W	1/2L	\$8.85
	55-1092	2-15W	1L	\$14.77
	55-1100	2-20W	1/2L	\$8.85
	55-1102	2-20W	1L	\$14.77
	55-1110	2-30W	1/2L	\$8.85
	55-1112	2-30W	1L	\$14.77

**CLUTCH TUNER
2-STROKE GEAR OIL**

- Smoother shifting, extends clutch plate life.
- Won't break down under extreme loads.
- Non-foaming.
- Specially formulated for 2-stroke transmissions.



PART#s	VL#	MFR#	Size	Retail
	55-1299	11-75	75W 1L	\$14.72
	55-1300	11-32	80W 1L	\$13.90



CABLE LUBE

- Cleans and lubricates in one application!
- Makes cables operate smoother.
- Extends cable life.

PART#s	VL#	MFR#	Nt Wt	Retail
	55-1047	1-12	11 oz.	\$10.85

**PROFESSIONAL CARTRIDGE
PRO FORK PRO**

- Improves damping and rebound action.
- Better traction and handling.
- Controls seal swelling for better feel.

PART#s	VL#	MFR#	Size	Retail
	55-1285	10-32KS	1L	\$28.58





DRIVE SHAFT HYPOID GEAR OIL

- Non-foaming high performance formula.
- Withstands extreme heat and cold.
- Quiets rear end noise.

PART#s

VL#	MFR#	Size	Retail
55-1310	11-90	90W - 1L	\$18.05



GOLDFIRE™ 4-STROKE SYNTHETIC BLEND MOTOR OIL

- New synthetic formulation.
- Cooler running for reduced engine wear.
- Formulated specifically for motorcycle engines.
- Smoother shifting.
- Extends clutch and transmission life.
- Low coefficient of friction for higher RPM's.
- Increases horsepower.

PART#s

VL#	MFR#	Size	Retail
55-1262	9-32	10W-40 1L	\$13.45
55-1264	9-32-1G	10W-40 1 GAL	\$50.63
55-1272	9-50	20W-50 1L	\$15.07
55-1274	9-50-1G	20W-50 1GAL	\$50.25



GOLDFIRE™ PRO PREMIX 2T

- Designed for the serious racer.
- Clean burning, no carbon build-up.
- Advanced petroleum/synthetic formula.
- Piston and Rings last twice as long.
- May be mixed up to 50:1

PART#s

VL#	MFR#	Size	Retail
55-1200	8-16	1/2L	\$11.80
55-1205	8-16-1L	1L	\$21.17
55-1214	8-16-1G	1GAL	\$70.33



SILVERFIRE™ SCOOTER INJECTOR 2T

- Special scooter formula.
- Reduces carbon build-up.
- Stops plug fouling.
- Increases engine life.
- Stops scuffing & drastically improves piston life.

PART#s

VL#	MFR#	Size	Retail
55-1192	7-50	1L	\$15.75



SILVERFIRE™ PREMIX 2T

- Ideal for all general 2-stroke applications.
- Petroleum/synthetic blend.
- Improves piston and ring life.
- Stops plug fouling.

PART#s

VL#	MFR#	Size	Retail
55-1162	6-32-1L	1L	\$15.75

SILVERFIRE™ 4-STROKE PREMIUM PETROLEUM MOTOR OIL

- Cooler running for reduced engine wear.
- Formulated specifically for motorcycle engines.
- Smoother shifting.
- Extends clutch and transmission life.
- Low coefficient of friction for higher RPM's.
- Increases horsepower.



PART#s

VL#	MFR#	Size	Retail
55-1220	9-32-PET	10W-40 1L	\$12.80
55-1224	9-32-1G-PET	10 W-40 1 GAL	\$41.43
55-1250	9-50-PET	20W-50 1L	\$12.80
55-1254	9-50-1G-PET	20 W-50 1 GAL	\$41.43



SILVERFIRE™ INJECTOR/ PREMIX 2T

- Eliminates spark plug fouling & carbon deposits.
- Smokeless formula leaves exhaust clean from residue.
- Advanced petroleum/synthetic formula.
- Piston and Rings last twice as long.
- Super lubricating formula.

PART#s

VL#	MFR#	Size	Retail
55-1310	7-32	90W - 1L	15.75

CHEMICALS & LUBES

INDEX

DEALER SUPPORT

HELMETS

MX APPAREL

GOGGLES & EYEWEAR

MX /ATV EQUIPMENT

HANDLEBARS & GRIPS

STREET ACCESSORIES

STREET APPAREL

CHAIN & SPROCKETS

BRAKES & ROTORS

CLUTCHES

SUSPENSION

MIRRORS

MANUALS

LUGGAGE

CHEMICALS & LUBES

MISC.

TIE DOWNS

SECURITY

ELECTRICAL

FILTERS

EXHAUST

TIRE & WHEEL

ORDER SHEET

FAST BLACK PAINTS

Gloss Black 500° Engine and Case Paint

(#16-ENG)

- High gloss durable finish.
- Restores case and engine components.
- Prevents rust and corrosion.
- Resists chipping.

Gloss Black Epoxy Paint

(#16-GLS)

- High gloss durable finish.
- Prevents rust and corrosion.
- Resists peeling, chipping & rubbing off.

Flat Black 1500° Exhaust Paint

(#16-HIT)

- Factory-like smooth finish.
- Prevents rust and corrosion.
- For all 4-stroke and 2-stroke exhaust systems!

Satin Black 500° Engine and Case Paint

(#16-SAT)

- Semi-gloss finish.
- Restores case and engine components.
- Prevents rust and corrosion.
- Resists chipping.

Wrinkle Black 500° Texture Paint

(#16-WKL)

- Provides durable textured finish.
- Prevents rust and corrosion.
- Resists chipping/rubbing off.
- Nt Wt. 11oz.



GLOSS CLEAR

- 17-CLR is a tough epoxy that protects and increases gloss
- For use over 16-ENG, 16-SAT & 16-GLS
- Nt Wt. 11oz.



PART#s	VL#	MFR#	Description	Retail
	55-1416	17-CLR	CLR TOP COAT	\$11.80

OCTANE PLUS GAS ENERGIZER WITH LEAD SUBSTITUTE

- Makes ordinary pump gas power fuel.
- Controls knocking and pinging.
- Increases horsepower.
- Spark plugs last longer.
- Safe on plastics and fiber reeds.
- Stabilizes fuel during storage.
- Prevents gas freeze-up during cold weather.



PART#s	VL#	MFR#	Size	Retail
	55-1330	13-16	16 fl.oz	\$11.15

13-16

TRACK BITE TRACTION COMPOUND

- Custom formulated resin that provides controlled traction for competition racing.
- Water resistant liquid track & tire treatment, which improves traction on asphalt & concrete surfaces
- Does not soften or harm tires
- NHRA & IHRA approved
- Ready to use, no mixing required



PART#s	VL#	MFR#	Size	Retail
	55-1695	SP-162	1 GAL.	\$59.13

INJECTOR AND CARBURETOR CLEANER

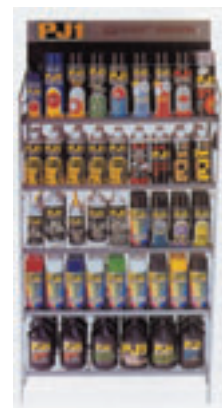
- Cleans fuel systems quickly and efficiently.
- Increases power and efficiency.
- Improves fuel economy.
- Lengthens engine life.
- Dissolves harmful fuel deposits.
- Removes varnish build-up in fuel lines.



PART#s	VL#	MFR#	Size	Retail
	55-1340	13-12	12 fl.oz	\$8.35

PJ1 DISPLAYS

- 180 can Rack (shown) measures: 26 1/2"W x 45"H x 12"D.
- 48 can Cardboard Floor display.
- Increase sales with attractive display!
- Call for details.



PART#s	VL#	MFR#	Description	Retail
	55-4915	RACK-48-P	48 can Floor	\$38.73
	55-4930	RACK-180-P	180 can Rack	\$180.40

PART#s	VL#	MFR#	Size	Retail
	55-1410	16-ENG	GLOSS BLK	\$11.80
	55-1370	16-GLS	HI-GLOSS BLK	\$11.80
	55-1380	16-HIT	HIGH TEMP BLK	\$13.28
	55-1390	16-SAT	SATIN BLK	\$11.80
	55-1400	16-WKL	WRINKLE BLK	\$13.28



23-8 23-16

RENEW & PROTECT

- Renews and protects all rubber, plastic, vinyl and fine leather.
- New super silicone moisturizing formula!
- Contains no damaging plasticizers or Petroleum Distillates.

PART#s	VL#	MFR#	Size	Retail
	55-1610	23-8	8 fl.oz	\$7.75
	55-1620	23-16	16 fl.oz	\$11.73

FOG BLOCKER

- Prevents fog from forming on goggles, face shields, glasses, mirrors, and more.
- Consistent reliable visibility at high speeds .
- PJ1 Fog Blocker ensures crystal clear vision under extreme conditions.



PART#s	VL#	MFR#	Size	Retail
	55-1690	25-4	4 fl.oz	\$7.87

INDEX

DEALER SUPPORT

HELMETS

MX APPAREL

GOGGLES & EYEWEAR

MX /ATV EQUIPMENT

HANDLEBARS & GRIPS

STREET ACCESSORIES

STREET APPAREL

CHAIN & SPROCKETS

BRAKES & ROTORS

CLUTCHES

SUSPENSION

MIRRORS

MANUALS

LUGGAGE

CHEMICALS & LUBES

MISC.

TIE DOWNS

SECURITY

ELECTRICAL

FILTERS

EXHAUST

TIRE & WHEEL

ORDER SHEET